

Hands On Science provides science learning opportunities in the Edmonton area for elementary students – grades K, 1, 2, 3, 4, 5 and 6.



All of our Field Trip Facilitators are professional, highly knowledgeable, enthusiastic, and experienced. We come to your school, bringing all the materials necessary to provide your students with fun, interactive, and educational experiences.

We are proud to have been serving schools in Edmonton and its surrounding areas since 2000.

FIELD TRIP GUIDELINES

We apply a **10% discount** to these field trips:

- Senses
- Rocks and Minerals
- Awesome Bridges
- Wheels & Levers
- Light and Shadows
- Mechanisms Using Electricity
- Classroom Chemistry
- Evidence and Investigation

if a field trip is booked twice and the following are met:

- **Same field trip**
- **Same school**
- **Same day**
- **Same room**

Class Size

Maximum 30 students. Over 30 will be charged \$15 + GST / student to an absolute maximum of 32.

Travel

Prices quoted are for schools within the Edmonton City limits. All other schools will be assessed an additional travel fee per visit.

Cancellation Policy

If notice is given more than 15 business days from the field trip, there is no cancellation charge. There is a \$50+ GST charge if between 15 and 6 days' notice is given. Cancellations within 5 days of the field trip will be charged the full amount.

You can reach us at:

Hands On Science

1941 Tomlinson Way NW

Edmonton, AB T6R 2R7

email: handsonscience@shaw.ca

Phone: (780) 408-7715

HANDS ON SCIENCE



Educational Field Trips Coming to your Classroom

www.handsonscience.ca
email: handsonscience@shaw.ca

Hands On Science field trips are tailored to learner expectations of the Alberta Science Program of Study. They address both the Science Inquiry and the Problem Solving Through Technology areas of skill.



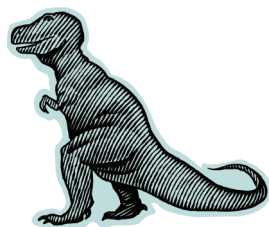
Because our focus is on the students performing hands-on activities, these field trips enhance the students' understanding of concepts. We bring everything required to run the field trip – science materials, workbooks, pens, and pencils. This eases the workload of the teacher. We come to you; all you need to provide is the space to work in, and the adult volunteers to supervise the field trip!



Kindergarten

DINOSAURS

1.25 Hours



Young archaeologists will have fun working at exploration centres where they will go on a dinosaur dig, explore "fossils", classify species, and sort and count based on dinosaur color and

characteristics. They are rewarded with a dinosaur and a fossil rub to take home from their adventure. Four adult helpers are **mandatory**.

Grade One

SENSES

1.5 Hours

Students will identify each of the 5 senses and how they contribute to our safety and quality of life. They will develop an in-depth awareness of their own senses through exploration and discovery at 5 hands-on sensory stations. Please contact the Hands On Science office with any allergy concerns, as there will be tasting and smelling at the stations. Five adult helpers are **mandatory**.



SAILORS & SAILBOATS

1.5 Hours



Students will explore a variety of shapes, and then use those shapes to build their own wooden sailboats and create sailor figures to go with them. The best part is: everyone gets to take home what he or she makes! **Mandatory** adult helpers ratio is 1:5 students.



Grade Two

BUOYANCY & BOATS

1.75 Hours



Students will enjoy being scientists by performing buoyancy experiments with a variety of materials. They will also have fun being carpenters and building their own paddle boats to take home. Four adult helpers are **mandatory**.

MAGNETISM

1.5 Hours



Students will explore magnetism using a variety of different magnets. They will learn about polarity and other properties of this fun subject. Watch as each student magnetizes a pair of scissors which they then get to take home with them. Five adult helpers are **mandatory**.

Grade Three

ROCKS & MINERALS

2 Hours



Students will discover similarities and differences in Rocks, Minerals and Soil. They will do this by testing, classifying, and observing the characteristics of these samples. Six adult helpers are **mandatory**.

AWESOME BRIDGES

2 Hours

Students will be intrigued when they work in groups at building scale models of Roman Arch, Truss, Girder and Suspension Bridges out of "stone", metal, cable and wood. Four adult helpers are **mandatory**.

This field trip must be held in a ground floor room with open floor space. If your school has indoor or outdoor stairs and no elevator or ramp, we are unable to deliver the field trip at your school -- no exceptions.



Grade Four

WHEELS & LEVERS

2 Hours



Students will explore the different techniques that can be used to transfer force into motion, i.e. friction, class 1, 2, 3 levers, gears and pulleys. Six adult helpers are **mandatory**.

This field trip requires access to a chalkboard or white board.

LIGHT & SHADOWS

2 Hours



Students will learn that light is another form of energy. Using mirrors and prisms students will discover that light can be reflected, refracted or split into colours. Students will learn that the path of light can be affected by different materials. They will also observe shadows created by light sources and discuss their motion relative to that light source. Five adult helpers are **mandatory**.

Grade Five

CLASSROOM CHEMISTRY

2 Hours



Students will conduct a number of experiments to discover what happens when solids and liquids are mixed together. They will learn that some materials will dissolve, some will react with each other, some will remain unaffected, some reactions will be reversible, and some not. Six adult helpers are **mandatory**.

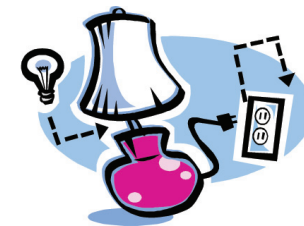
This field trip must be held in a room with a sink and water and at least one electrical outlet.



Grade Five (cont'd)

MECHANISMS USING ELECTRICITY

2 Hours



Students will build and experience simple, series and parallel circuits using batteries, lights and buzzers. These elements are then used in experiments with burglar alarms and powering a model school bus with lights and a motor. Six adult helpers are **mandatory**.

Grade Six

FLIGHT

2 - 2.5 Hours

Students apply their knowledge of aerodynamics to construct, test and modify their own paper and wood plane. The principles of flight are examined, tested and discussed through various experiments. Constructed models will remain with the classroom. 2 - 3 adult helpers are **mandatory**.



*** Gymnasium use is MANDATORY for the last 30 minutes of this field trip.**

EVIDENCE & INVESTIGATION

2.5 Hours

Using a mock crime scene, students will apply their skills and knowledge in investigating and analyzing evidence of human and animal activity.



By using methods learned, students will work in teams to use paper chromatography, lift fingerprints, and analyze fabric samples, handwriting, footprints, & soil in an effort to link a suspect to the scene of the crime. Five adult helpers are **mandatory**.

